

### ELECTRICAL

Wire Size:

- Solder Cup Type . . . . . One #20 AWG
- Eyelet Type . . . . . Two #20 AWG or Three #22 AWG

Current Rating . . . . . 7.5 Amperes

Withstanding Voltage:

- Contact to Contact Sea Level . . . . . 2700 VRMS Minimum
- Contact to Ground Sea Level . . . . . 2700 VRMS Minimum
- Contact to Contact 70,000 Ft. . . . . 560 VRMS Minimum
- Contact to Ground 70,000 Ft. . . . . 560 VRMS Minimum

### MECHANICAL

- Creepage Between Contacts . . . . . 0.16 Minimum
- Air Space Between Contacts . . . . . 0.10 Minimum
- Contacts to Accept 0.040 ± 0.001 DIA. Pins

Contacts:

- Spring Temper Grade "A" Phosphor Bronze, or Heat Treated Beryllium Copper
- Gold Plated over Copper or Nickel Plate

Mounting Hardware:

- Special Studs, Screws, Lockwashers, and Nuts

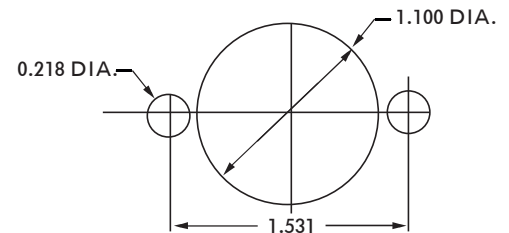
Insulation Material:

- Choice of "MIL Approved" Thermosetting Insulations (See Page 45)

Temperature Ratings: -65°C to +125°C

Weight of Socket with Mountings: 0.95 oz.

CLOSURE ENTRY	CONTACT DATA	CHASSIS MOUNTING DATA		
		CHASSIS THICKNESS	X-DIMENSION	
 SOLDER CUP	1/16	.12		HRSB - 1K
	3/32	.09		HRSB - 31K
	1/8			
 EYELET	1/16	.12		HRSB - 5K    HRSB - 6K
	3/32	.09		HRSB - 35K
	1/8	.06	HRSB - 45K	
 STRAIGHT	7/32	.12		HRSB - 4K    HRSB - 10K
	3/32			
	1/8			



RECOMMENDED CHASSIS CUT-OUT