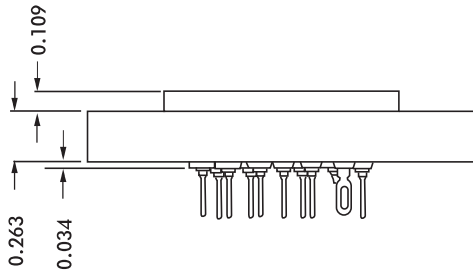
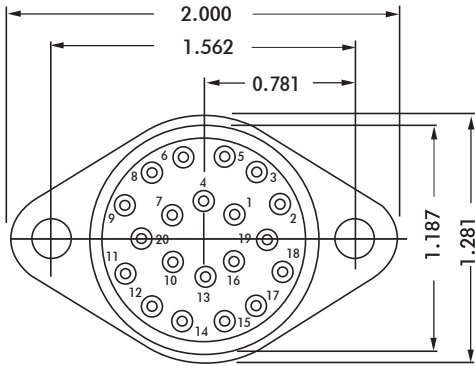




HRSS SERIES



ELECTRICAL

Wire Size:

- Solder Cup Type One #20 AWG
- Turret Type Two #20 AWG or
Three #22 AWG
- Eyelet Type Two #20 AWG or
Three #22 AWG
- Taper Type One AMP "37" Taper
Receptacle

Current Rating 7.5 Amperes
Withstanding Voltage:

- Contact to Contact Sea Level 2700 VRMS Minimum
- Contact to Ground Sea Level 2700 VRMS Minimum
- Contact to Contact 70,000 Ft. 560 VRMS Minimum
- Contact to Ground 70,000 Ft. 560 VRMS Minimum

MECHANICAL

- Creepage Between Contacts 0.16 Minimum
- Air Space Between Contacts 0.09 Minimum
- Contacts to Accept 0.040 ± 0.001 DIA. Pins

Contacts:

- Spring Temper Grade "A" Phosphor Bronze, or
Heat Treated Beryllium Copper
- Gold Plated over Copper or Nickel Plate

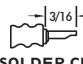
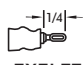
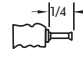
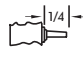
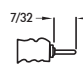
Mounting Hardware:

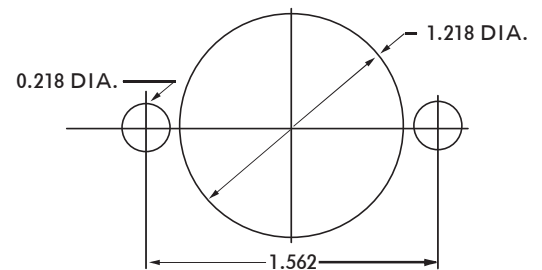
- Special Studs, Screws, Lockwashers, and Nuts

Insulation Material:

- Choice of "MIL Approved" Thermosetting
Insulations (See Page 45)

Temperature Ratings: -65°C to +125°C
Weight of Socket with Mountings: 0.96 oz.

CONTACT DATA	CHASSIS MOUNTING DATA				
	CHASSIS THICKNESS	X-DIMENSION	X		
			BELOW CHASSIS	ABOVE CHASSIS	
	1/16	.12		HRSS - 1	HRSS - 2
	3/32	.09		HRSS - 31	HRSS - 32
	1/8	.06	HRSS - 41		HRSS - 42
	1/16	.12		HRSS - 5	HRSS - 6
	3/32	.09		HRSS - 35	HRSS - 36
	1/8	.06	HRSS - 45		HRSS - 46
	1/16	.12		HRSS - 3	HRSS - 4
	3/32	.09		HRSS - 33	HRSS - 34
	1/8	.06	HRSS - 43		HRSS - 44
	1/16				
	3/32				
	1/8				
	1/16				HRSS - 210
	3/32				
	1/8				HRSS - 2910



RECOMMENDED CHASSIS CUT-OUT