

CONTACT DATA	CHASSIS MOUNTING DATA				
	CHASSIS THICKNESS	X-DIMENSION	BELOW CHASSIS	BELOW CHASSIS	ABOVE CHASSIS
 SOLDER CUP	1/16	.22	HRG-1		HRG-2
	3/32				
	1/8				
 EYELET	1/16	.22	HRG-5		HRG-6
	3/32				
	1/8				
 STRAIGHT	1/16	.22	HRG-13		HRG-14
	3/32				
	1/8				
 TURRET	1/16	.22	HRG-3		HRG-4
	3/32				
	1/8				

ELECTRICAL

Wire Size:

- Solder Cup Type One #20 AWG
- Eyelet Type Two #20 AWG
- Three #22 AWG

Current Rating 7.5 Amperes

Withstanding Voltage:

- Contact to Contact Sea Level. 1500 VRMS Minimum
- Contact to Ground Sea Level. 1500 VRMS Minimum
- Contact to Contact 70,000 Ft. 375 VRMS Minimum
- Contact to Ground 70,000 Ft. 375 VRMS Minimum

MECHANICAL

- Creepage Between Contacts. 0.11 Minimum
- Air Space Between Contacts. 0.05 Minimum
- Contacts to Accept 0.040 ± 0.001 DIA. Pins

Contacts:

- Spring Temper Grade "A" Phosphor Bronze, or
- Heat Treated Beryllium Copper
- Gold Plated over Copper or Nickel Plate

Mounting Hardware:

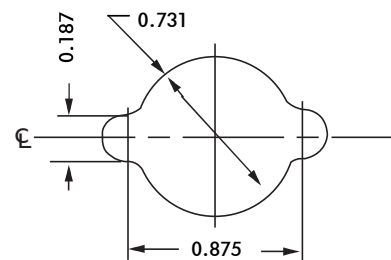
- Special Studs, Screws, Lockwashers, and Nuts

Insulation Material:

- Choice of **MIL Approved** Thermosetting
- Insulations (See Page 45)

Temperature Ratings: -65°C to +125°C

Weight of Socket with Mountings: 0.45 oz.



RECOMMENDED CHASSIS CUT-OUT