

ELECTRICAL

Wire Size:

- Solder Cup Type One #20 AWG
- Turret Type Two #20 AWG or
Three #22 AWG
- Eyelet Type Two #20 AWG or
Three #22 AWG
- Taper Type One AMP ?37? Taper
Receptacle

Current Rating 7.5 Amperes

Withstanding Voltage:

- Contact to Contact Sea Level 1800 VRMS Minimum
- Contact to Ground Sea Level 3300 VRMS Minimum
- Contact to Contact 70,000 Ft. 450 VRMS Minimum
- Contact to Ground 70,000 Ft. 675 VRMS Minimum

MECHANICAL

- Creepage Between Contacts 0.12 Minimum
- Air Space Between Contacts 0.06 Minimum
- Contacts to Accept 0.040 ± 0.001 DIA. Pins

Contacts:

- Spring Temper Grade "A" Phosphor Bronze, or
- Heat Treated Beryllium Copper
- Gold Plated over Copper or Nickel Plate

Mounting Hardware:

- Special Studs, Screws, Lockwashers, and Nuts

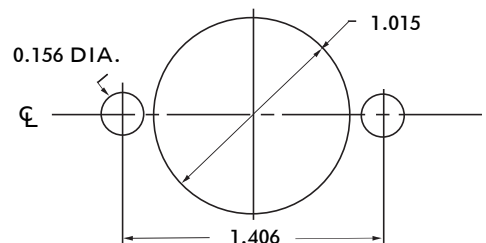
Insulation Material:

- Choice of **MIL Approved** Thermosetting
- Insulations (See Page 45)

Temperature Ratings: -65°C to +125°C

Weight of Socket with Mountings: 0.65 oz.

CONTACT DATA	CHASSIS MOUNTING DATA						
	CHASSIS THICKNESS	STYLE	NO. OF CONTACTS	CONTACT MOUNTING			
				BELOW CHASSIS	BELOW CHASSIS	ABOVE CHASSIS	
	1/16	II	21	HR-50		HR-50	
		I	20	HR-59		HR-59	
	3/32	II	21		HR-350		
		I	20		HR-359		
	1/16	II	15	HR-53		HR-53	
		I	14	HR-62		HR-62	
SOLDER CUP	1/16	II	9	HR-56		HR-56	
		I	8	HR-65		HR-65	
	1/16	II	21	HR-51		HR-51	
		I	20	HR-60		HR-60	
		1/16	II	21		HR-351	
			I	20		HR-360	
1/16		II	15	HR-54		HR-54	
		I	14	HR-63		HR-63	
1/16		II	9	HR-57		HR-57	
		I	8	HR-66		HR-66	
TURRET	1/16	II	21	HR-52		HR-52	
		I	20	HR-61		HR-61	
	3/32	II	21		HR-352		
		I	20		HR-361		
		1/16	II	15	HR-55		HR-55
			I	14	HR-64		HR-64
1/16		II	9	HR-58		HR-58	
		I	8	HR-67		HR-67	
1/16		II	21	HR-68		HR-68	
		I	20	HR-71		HR-71	
EYELET	1/16	II	21				
		I	20				
	3/32	II	21				
		I	20				
	1/16	II	15				
		I	14				
1/16	II	9					
	I	8					
TAPER PIN	1/16	II	21				
		I	20				
	3/32	II	21				
		I	20				
	1/16	II	15				
		I	14				
1/16	II	9					
	I	8					



RECOMMENDED CHASSIS CUT-OUT