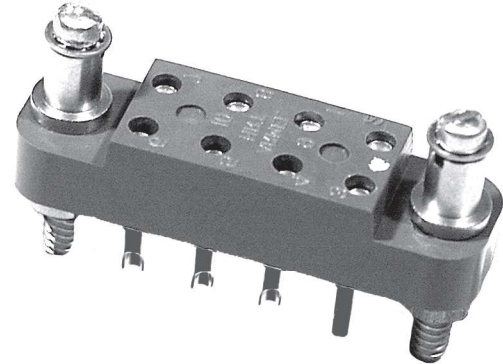
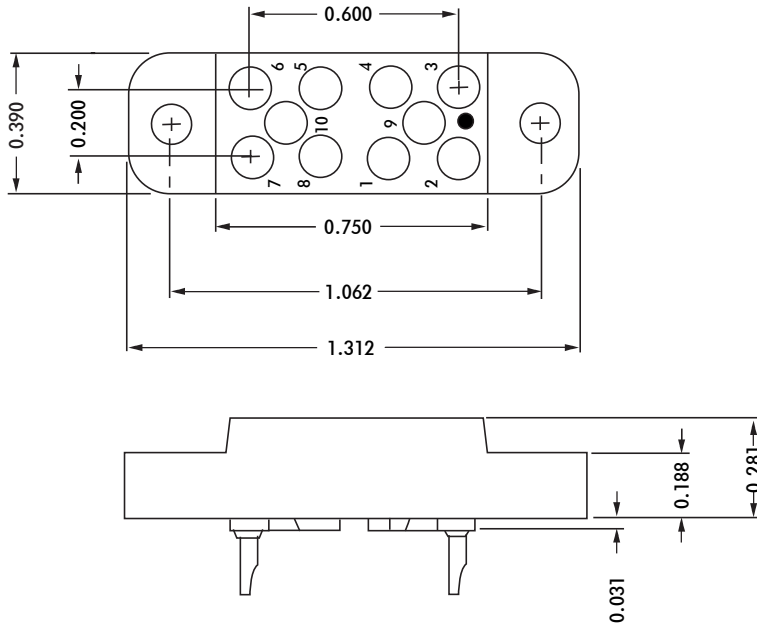




# HRTA SERIES



CONTACT DATA		CHASSIS MOUNTING DATA				
		CHASSIS THICKNESS	X-DIMENSION			
OPEN ENTRY	SOLDER CUP	1/16	.17	HRTA - 1		HRTA - 2
		3/32	.14			HRTA - 31
		1/8	.12			HRTA - 41
	EYELET	1/16	.17	HRTA - 5		
		3/32	.14			HRTA - 35
		1/8	.12			HRTA - 45
	STRAIGHT	1/16				HRTA - 4
		3/32				HRTA - 34
		1/8				
CLOSED ENTRY	SOLDER CUP	1/16	.17	HRTA - 1K		HRTA - 2K
		3/32	.14			
		1/8	.12			
	EYELET	1/16	.17	HRTA - 5K		
		3/32	.14			HRTA - 35K
		1/8	.12			HRTA - 45K
	STRAIGHT	1/16				HRTA - 4K
		3/32				HRTA - 34K
		1/8				

### ELECTRICAL:

Wire Size

- Solder Cup Type. . . . . One #20 AWG
- Eyelet Type. . . . . Two #20 AWG or Three #22 AWG

Current Rating. . . . . 3 Amperes

Withstanding Voltage:

- Contact to Contact Sea Level. . . 1500 VRMS Minimum
- Contact to Ground Sea Level. . . 1500 VRMS Minimum
- Contact to Contact 70,000 Ft. . . .375 VRMS Minimum
- Contact to Ground 70,000Ft. . . .375 VRMS Minimum

### MECHANICAL:

- Creepage Between Contacts. . . . . 0.17 Minimum
- Air Space Between Contacts. . . . . 0.11 Minimum
- Contacts to Accept 0.030 + 0.001 DIA. Pins

Contacts:

- Spring Temper Grade "A" Phosphor Bronze or Heat Treated Beryllium Copper
- Gold Plated over Copper or Nickel Plate

Mounting Hardware:

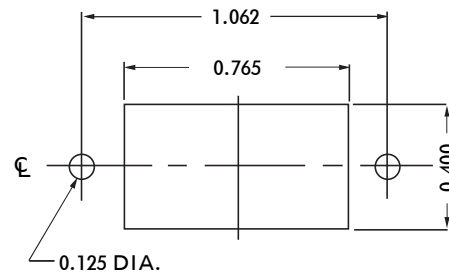
- Special Studs, Screws, Lockwashers, and Nuts

Insulation Material

- Choice of **MIL Approved** Thermosetting Insulations (See Page 45)

Temperature Ratings: -65°C to +125°C

Weight of Socket with Mountings: 0.30 oz.



RECOMMENDED CHASSIS CUT-OUT