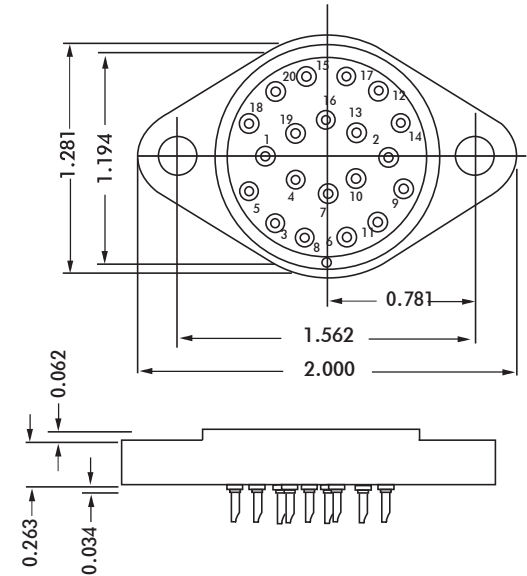
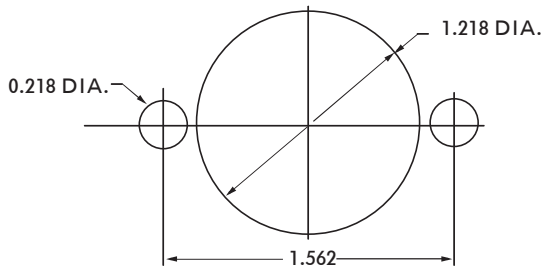


HRSE SERIES



CONTACT DATA	CHASSIS MOUNTING DATA				
	CHASSIS THICKNESS	X-DIMENSION	BELOW CHASSIS	BELOW CHASSIS	ABOVE CHASSIS
 SOLDER CUP	$\frac{1}{16}$.12		HRSE - 1	HRSE - 2
	$\frac{3}{32}$.09		HRSE - 31	HRSE - 32
	$\frac{1}{8}$.06	HRSE - 41		HRSE - 42
 EYELET	$\frac{1}{16}$.12		HRSE - 5	HRSE - 6
	$\frac{3}{32}$.09		HRSE - 35	HRSE - 36
	$\frac{1}{8}$.06	HRSE - 45		HRSE - 46
 TURRET	$\frac{1}{16}$.12		HRSE - 3	HRSE - 4
	$\frac{3}{32}$.09		HRSE - 33	HRSE - 34
	$\frac{1}{8}$.06	HRSE - 43		HRSE - 44
 TAPER PIN	$\frac{1}{16}$.12		HRSE - 7	HRSE - 8
	$\frac{3}{32}$.09		HRSE - 37	HRSE - 38
	$\frac{1}{8}$.06	HRSE - 47		HRSE - 48



RECOMMENDED CHASSIS CUT-OUT

ELECTRICAL

Wire Size:

- Solder Cup Type One #20 AWG
- Turret Type Two #20 AWG or Three #22 AWG
- Eyelet Type Two #20 AWG or Three #22 AWG
- Taper Type One AMP "37" Taper Receptacle

Current Rating 7.5 Amperes

Withstanding Voltage:

- Contact to Contact Sea Level 2700 VRMS Minimum
- Contact to Ground Sea Level 2700 VRMS Minimum
- Contact to Contact 70,000 Ft. 560 VRMS Minimum
- Contact to Ground 70,000 Ft. 560 VRMS Minimum

MECHANICAL

- Creepage Between Contacts 0.16 Minimum
- Air Space Between Contacts 0.09 Minimum
- Contacts to Accept 0.040 ±0.001 DIA. Pins

Contacts:

- Spring Temper Grade "A" Phosphor Bronze, or Heat Treated Beryllium Copper
- Gold Plated over Copper or Nickel Plate

Mounting Hardware:

- Special Studs, Screws, Lockwashers, and Nuts

Insulation Material:

- Choice of "MIL Approved" Thermosetting Insulations (See Page 45)

Temperature Ratings: -65°C to +125°C

Weight of Socket with Mountings: 0.96 oz.