

HRY-285

**ELECTRICAL**

Wire Size:  
 Solder Cup Type . . . . . N.A.  
 Eyelet Type . . . . . One #16 AWG or Two #20 AWG  
 Current Rating . . . . . 10 Amperes

**MECHANICAL**

Creepage Between Contacts . . . . . 0.07 Minimum  
 Air Space Between Contacts . . . . . 0.07 Minimum  
 Contacts to Accept 0.060 ± 0.005 DIA. Pins

Contacts:

Heat Treated Beryllium Copper  
 Gold Plated over Copper or Nickel Plate

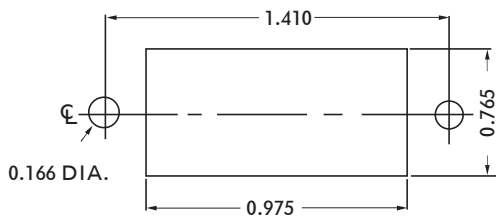
Mounting Hardware:

Special Studs, Screws, Lockwashers, and Nuts

Insulation Material:

Choice of "MIL Approved" Thermosetting Insulations (See Page 45)

Temperature Ratings: -65°C to +125°C  
 Weight of Socket with Mountings: 0.85 oz.



RECOMMENDED CHASSIS CUT-OUT