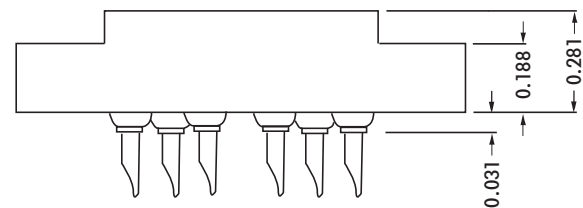
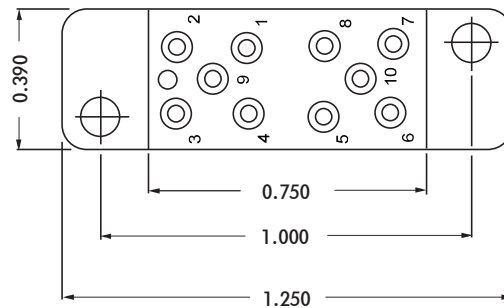
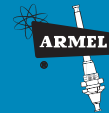


HRT SERIES



CONTACT DATA		CHASSIS MOUNTING DATA				
		CHASSIS THICKNESS	X-DIMENSION			
OPEN ENTRY	SOLDER CUP	1/16	0.17	HRT - 1	HRT - 2	
			0.17	HRT - 7	HRT - 8	
			0.23	HRT - 13	HRT - 14	
	EYELET	1/16	0.17	HRT - 5	HRT - 6	
			0.17	HRT - 11	HRT - 12	
			0.23	HRT - 17	HRT - 18	
	STRAIGHT	1/16	0.17	HRT - 3	HRT - 4	
			0.17	HRT - 9	HRT - 10	
			0.23	HRT - 15	HRT - 16	
	CLOSED ENTRY	SOLDER CUP	1/16	0.17	HRT - 1K	HRT - 2K
				0.17	HRT - 7K	HRT - 8K
				0.23	HRT - 13K	HRT - 14K
EYELET		1/16	0.17	HRT - 5K	HRT - 6K	
			0.17	HRT - 11K	HRT - 12K	
			0.23	HRT - 17K	HRT - 18K	
STRAIGHT		1/16	0.17	HRT - 3K	HRT - 4K	
			0.17	HRT - 9K	HRT - 10K	
			0.23	HRT - 15K	HRT - 16K	

ELECTRICAL

Wire Size:

Solder Cup Type One #20 AWG
 Eyelet Type Two #20 AWG or
 Three #22 AWG

Current Rating 3 Amperes

Withstanding Voltage:

Contact to Contact Sea Level . . 1500 VRMS Minimum
 Contact to Ground Sea Level . . 1500 VRMS Minimum
 Contact to Contact 70,000 Ft. . . 375 VRMS Minimum
 Contact to Ground 70,000 Ft. . . 375 VRMS Minimum

MECHANICAL

Creepage Between Contacts 0.11 Minimum
 Air Space Between Contacts 0.05 Minimum
 Contacts to Accept 0.030 ± 0.001 DIA. Pins

Contacts:

Spring Temper Grade "A" Phosphor Bronze, or
 Heat Treated Beryllium Copper
 Gold Plated over Copper or Nickel Plate

Mounting Hardware:

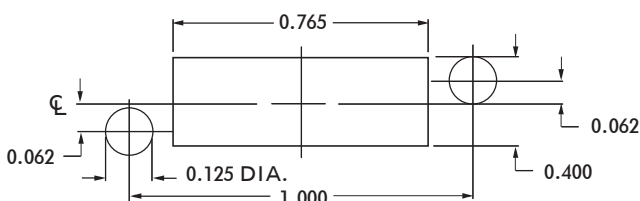
Special Studs, Screws, Lockwashers, and Nuts

Insulation Material:

Choice of **MIL Approved** Thermosetting
 Insulations (See Page 45)

Temperature Ratings: -65°C to +125°C

Weight of Socket with Mountings: 0.26 oz.



RECOMMENDED CHASSIS CUT-OUT