

CONTACT DATA		CHASSIS MOUNTING DATA				
		CHASSIS THICKNESS	X-DIMENSION	BELOW CHASSIS	BELOW CHASSIS	ABOVE CHASSIS
OPEN ENTRY	SOLDER CUP	1/16	.17	HRKB - 1		HRKB - 2
		3/32	.14		HRKB - 31	HRKB - 32
		1/8	.12		HRKB - 41	HRKB - 42
	EYELET	1/16	.17	HRKB - 5		HRKB - 6
		3/32	.14		HRKB - 35	HRKB - 36
		1/8	.12		HRKB - 45	HRKB - 46
STRAIGHT	1/16				HRKB - 4	
	3/32					
	1/8					
CLOSED ENTRY	SOLDER CUP	1/16	.17	HRKB - 1K		HRKB - 2K
		3/32	.14		HRKB - 31K	HRKB - 32K
		1/8	.12		HRKB - 41K	HRKB - 42K
	EYELET	1/16	.17	HRKB - 5K		HRKB - 6K
		3/32	.14		HRKB - 35K	HRKB - 36K
		1/8	.12		HRKB - 45K	HRKB - 46K
	STRAIGHT	1/16				HRKB - 4K
		3/32				
		1/8				

ELECTRICAL

Wire Size:

- Solder Cup Type. One #20 AWG
- Eyelet Type. Two #20 AWG or Three #22 AWG

Current Rating. 3 Amperes

Withstanding Voltage:

- Contact to Contact Sea Level. 1000 VRMS Minimum
- Contact to Ground Sea Level. 2250 VRMS Minimum
- Contact to Contact 70,000 Ft. 300 VRMS Minimum
- Contact to Ground 70,000 Ft. 500 VRMS Minimum

MECHANICAL

- Creepage Between Contacts. 0.09 Minimum
- Air Space Between Contacts. 0.03 Minimum
- Contacts to Accept 0.030 ± 0.001 DIA. Pins

Contacts:

- Spring Temper Grade "A" Phosphor Bronze or Heat Treated Beryllium Copper
- Gold Plated over Copper or Nickel Plate

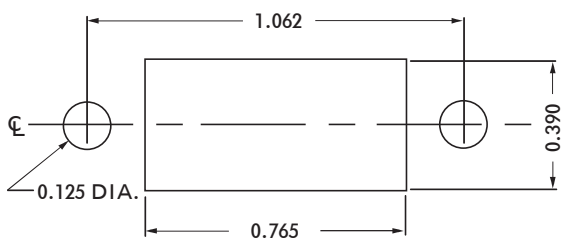
Mounting Hardware:

- Special Studs, Screws, Lockwashers, and Nuts

Insulation Material:

- Choice of **MIL Approved** Thermosetting Insulations (See Page 45)

Temperature Ratings: -65°C to +125°C
Weight of Socket with Mountings: 0.26 oz.



RECOMMENDED CHASSIS CUT-OUT