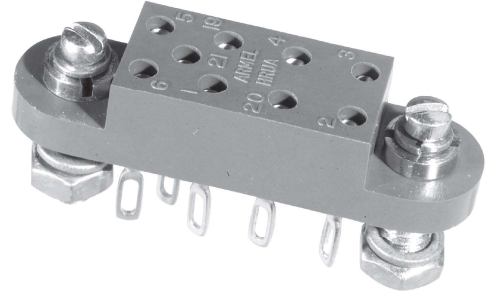
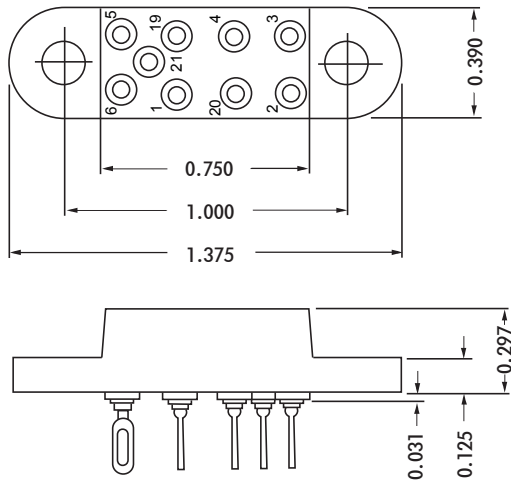




HRUA SERIES



ELECTRICAL

Wire Size:

Solder Cup Type One #20 AWG
 Eyelet Type Two #20 AWG or
 Three #22 AWG

Current Rating 3 Amperes

Withstanding Voltage:

Contact to Contact Sea Level . . . 1500 VRMS Minimum
 Contact to Ground Sea Level . . . 1000 VRMS Minimum
 Contact to Contact 70,000 Ft.375 VRMS Minimum
 Contact to Ground 70,000 Ft. 300 VRMS Minimum

MECHANICAL

Creepage Between Contacts 0.11 Minimum
 Air Space Between Contacts 0.05 Minimum
 Contacts to Accept 0.030 ± 0.001 DIA. Pins

Contacts:

Spring Temper Grade "A" Phosphor Bronze, or
 Heat Treated Beryllium Copper
 Gold Plated over Copper or Nickel Plate

Mounting Hardware:


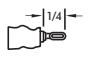
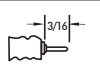
Special Studs, Screws, Lockwashers, and Nuts

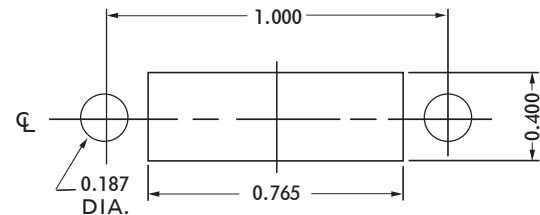
Insulation Material:

Choice of **MIL Approved** Thermosetting
 Insulations (See Page 45)

Temperature Ratings: -65°C to +125°C

Weight of Socket with Mountings: 0.24 oz.

CONTACT DATA	CHASSIS MOUNTING DATA				
	CHASSIS THICKNESS	X-DIMENSION	BELOW CHASSIS	BELOW CHASSIS	ABOVE CHASSIS
 SOLDER CUP	1/16				
	3/32	.06		HRUA - 31	
	1/8				
 EYELET	1/16				
	3/32	.06		HRUA - 35	
	1/8				
 STRAIGHT	1/16				
	3/32				
	1/8				



RECOMMENDED CHASSIS CUT-OUT