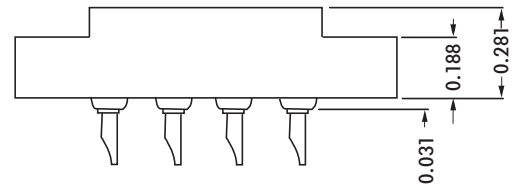
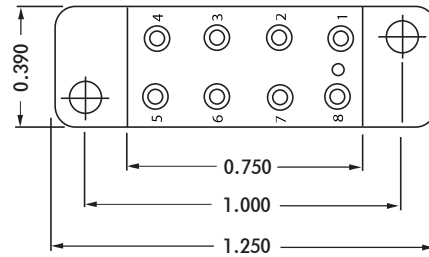
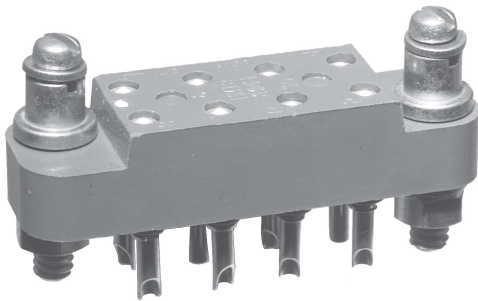
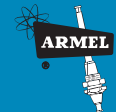
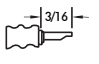
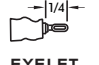








HRTS SERIES



CONTACT DATA	CHASSIS MOUNTING DATA			
	CHASSIS THICKNESS	X-DIMENSION	BELOW CHASSIS	ABOVE CHASSIS
OPEN ENTRY	SOLDER CUP 	1/16 .17	HRTS - 13	HRTS - 14
		3/32 .14		
		1/8 .12		
	EYELET 	1/16 .17	HRTS - 17	HRTS - 18
		3/32 .14		
		1/8 .12		
	STRAIGHT 	1/16 .17	HRTS - 15	HRTS - 16
		3/32 .17		
		1/8 .17	HRTS - 44	
	WIRE WRAP 	0.045 SQ. 1/16 .17	HRTS - 518	HRTS - 412
CLOSED ENTRY	SOLDER CUP 	1/16 .17	HRTS - 13K	HRTS - 14K
		3/32 .14		
		1/8 .12		
	EYELET 	1/16 .17	HRTS - 17K	HRTS - 18K
		3/32 .14		
		1/8 .12		
	STRAIGHT 	1/16 .17		HRTS - 16K
		3/32 .17		
		1/8 .17		
	WIRE WRAP 	0.025 SQ. 1/16 .17	HRTS - 518K	HRTS - 519K

ELECTRICAL:

- Wire Size
- Solder Cup Type. One #20 AWG
- Eyelet Type. Two #20 AWG or Three #22 AWG
- Current Rating. 3 Amperes
- Withstanding Voltage:
 - Contact to Contact Sea Level. 2700 VRMS Minimum
 - Contact to Ground Sea Level. 1500 VRMS Minimum
 - Contact to Contact 70,000 Ft. 560 VRMS Minimum
 - Contact to Ground 70,000 Ft. 375 VRMS Minimum

MECHANICAL

- Creepage Between Contacts. 0.17 Minimum
- Air Space Between Contacts. 0.11 Minimum
- Contacts to Accept 0.030 ± 0.001 DIA. Pins

Contacts:

- Spring Temper Grade "A" Phosphor Bronze, or Heat Treated Beryllium Copper
- Gold Plated over Copper or Nickel Plate

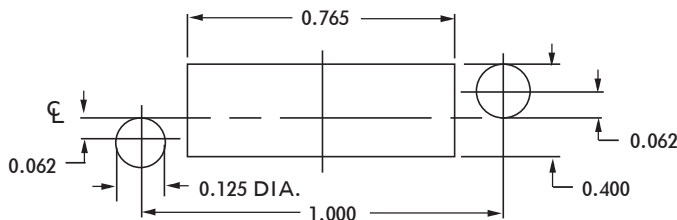
Mounting Hardware:

- Special Studs, Screws, Lockwashers, and Nuts

Insulation Material:

- Choice of MIL Approved Thermosetting Insulations (See Page 45)

- Temperature Ratings: -65°C to + 125°C
- Weight of Socket with Mountings: 0.26 oz.



RECOMMENDED CHASSIS CUT-OUT