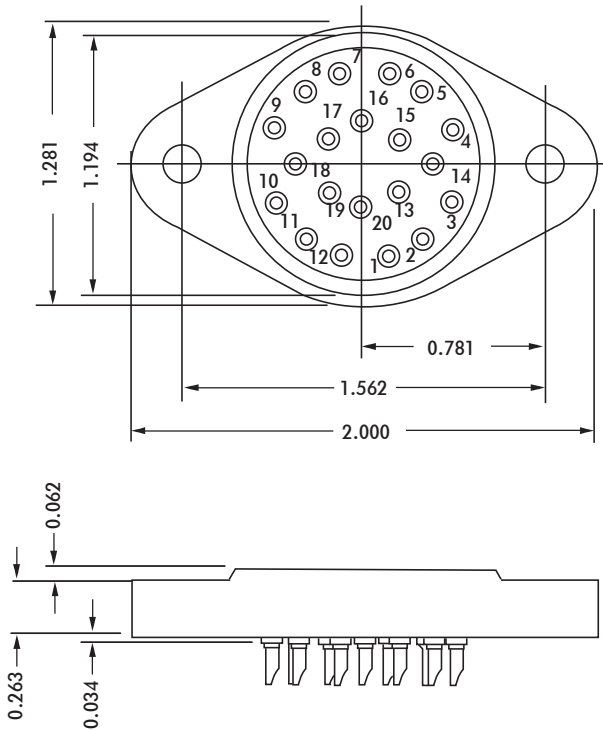




HRS SERIES



ELECTRICAL

- Wire Size:
 Solder Cup Type One #20 AWG
 Turret Type Two #20 AWG or
 Three #22 AWG
 Eyelet Type Two #20 AWG or
 Three #22 AWG
 Taper Type One AMP "37" Taper
 Receptacle
- Current Rating 7.5 Amperes
 Withstanding Voltage:
 Contact to Contact Sea Level 2700 VRMS Minimum
 Contact to Ground Sea Level 2700 VRMS Minimum
 Contact to Contact 70,000 Ft.560 VRMS Minimum
 Contact to Ground 70,000 Ft.560 VRMS Minimum

MECHANICAL

- Creepage Between Contacts 0.16 Minimum
 Air Space Between Contacts 0.09 Minimum
 Contacts to Accept 0.040 ± 0.001 DIA. Pins

Contacts:

- Spring Temper Grade "A" Phosphor Bronze, or Heat Treated Beryllium Copper
- Gold Plated over Copper or Nickel Plate

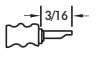
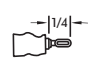
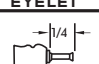


Mounting Hardware:

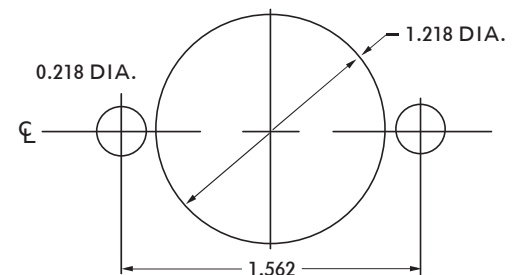
- Special Studs, Screws, Lockwashers, and Nuts

Insulation Material:

- Choice of "MIL Approved" Thermosetting Insulations (See Page 45)

- Temperature Ratings: -65°C to +125°C
 Weight of Socket with Mountings: 0.96 oz.

CONTACT DATA	CHASSIS MOUNTING DATA				
	CHASSIS THICKNESS	X-DIMENSION	CONTACT MOUNTING		
			BELOW CHASSIS	BELOW CHASSIS	ABOVE CHASSIS
	1/16	.12		HRS - 1	HRS - 2
	3/32	.09		HRS - 31	HRS - 32
	1/8	.06	HRS - 41		HRS - 42
	1/16	.12		HRS - 5	HRS - 6
	3/32	.09		HRS - 35	HRS - 36
	1/8	.06	HRS - 45		HRS - 46
	1/16	.12		HRS - 3	HRS - 4
	3/32	.09		HRS - 33	HRS - 34
	1/8	.06	HRS - 43		HRS - 44
	1/16	.12		HRS - 7	HRS - 8
	3/32	.09		HRS - 37	HRS - 38
	1/8	.06	HRS - 47		HRS - 48
	1/16				HRS - 10
	3/32				
	1/8				



RECOMMENDED CHASSIS CUT-OUT