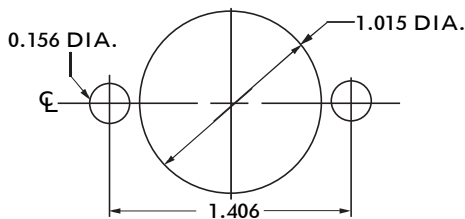


CONTACT DATA		CHASSIS MOUNTING DATA				
		CHASSIS THICKNESS	STYLE	NO. OF CONTACTS		
OPEN ENTRY	SOLDER CUP	1/16	II	21	HF-50	HF-50
			I	20	HF-59	HF-59
		1/16	II	15	HF-53	HF-53
			I	14	HF-62	HF-62
		1/16	II	9	HF-56	HF-56
			I	8	HF-65	HF-65
	TURRET	1/16	II	21	HF-51	HF-51
			I	20	HF-60	HF-60
		1/16	II	15	HF-54	HF-54
			I	14	HF-63	HF-63
		1/16	II	9	HF-57	HF-57
			I	8	HF-66	HF-66
EYELET	1/16	II	21	HF-52	HF-52	
		I	20	HF-61	HF-61	
	1/16	II	15	HF-55	HF-55	
		I	14	HF-64	HF-64	
	1/16	II	9	HF-58	HF-58	
		I	8	HF-67	HF-67	
CLOSED ENTRY	SOLDER CUP	1/16	II	21	HF-50K	HF-50K
			I	20	HF-59K	HF-59K
		1/16	II	15	HF-53K	HF-53K
			I	14	HF-62K	HF-62K
		1/16	II	9	HF-56K	HF-56K
			I	8	HF-65K	HF-65K
	EYELET	1/16	II	21	HF-52K	HF-52K
			I	20	HF-61K	HF-61K
		1/16	II	15	HF-55K	HF-55K
			I	14	HF-64K	HF-64K
		1/16	II	9	HF-58K	HF-58K
			I	8	HF-67K	HF-67K



RECOMMENDED CHASSIS CUT-OUT

ELECTRICAL

Wire Size:

- Solder Cup Type One #20 AWG
- Turret Type Two #20 AWG or Three #22 AWG
- Eyelet Type Two #20 AWG or Three #22 AWG
- Taper Type One AMP ?37? Taper Receptacle

Current Rating 7.5 Amperes

Withstanding Voltage:

- Contact to Contact Sea Level 1800 VRMS Minimum
- Contact to Ground Sea Level 3300 VRMS Minimum
- Contact to Contact 70,000 Ft. 450 VRMS Minimum
- Contact to Ground 70,000 Ft. 675 VRMS Minimum

MECHANICAL

- Creepage Between Contacts 0.12 Minimum
- Air Space Between Contacts 0.06 Minimum
- Contacts to Accept 0.040 ± 0.001 DIA. Pins

Contacts:

- Spring Temper Grade "A" Phosphor Bronze, or Heat Treated Beryllium Copper
- Gold Plated over Copper or Nickel Plate

Mounting Hardware:

- Special Studs, Screws, Lockwashers, and Nuts

Insulation Material:

- Choice of **MIL Approved** Thermosetting Insulations (See Page 45)

Temperature Ratings: -65°C to +125°C

Weight of Socket with Mountings: 1.10 oz.