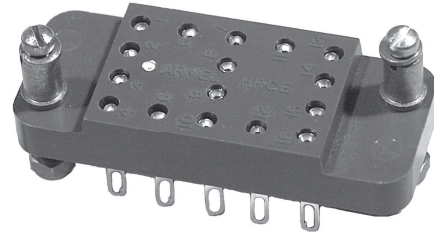
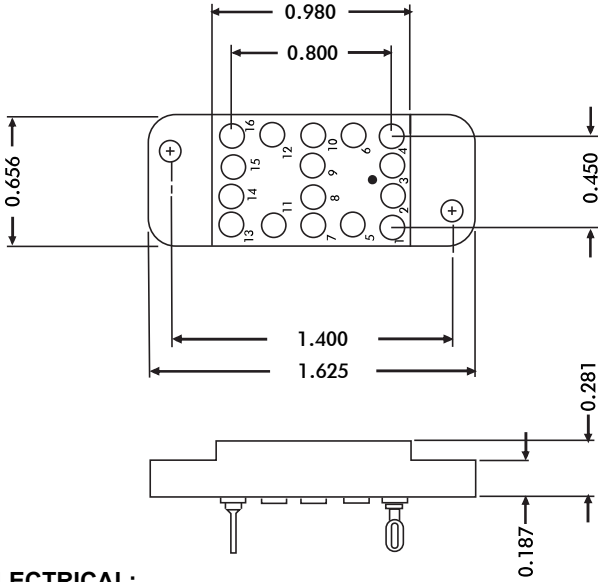




HRCE SERIES



ELECTRICAL:

Wire Size:

Solder Cup Type. One #20 AWG
 Eyelet Type. Two #20 AWG or
 Three #22 AWG

Current Rating. 3 Amperes

Withstanding Voltage:

Contact to Contact Sea Level. . . 1200 VRMS Minimum
 Contact to Ground Sea Level. . . .3300 VRMS Minimum
 Contact to Contact 70,000 Ft. . . .300 VRMS Minimum
 Contact to Ground 70,000 Ft. . . .675 VRMS Minimum

MECHANICAL:

Creepage Between Contacts. 0.12 Minimum
 Air Space Between Contacts. 0.05 Minimum
 Contacts to Accept 0.030 + 0.001 DIA. Pins

Contacts:

Spring Temper Grade "A" Phosphor Bronze or
 Heat Treated Beryllium Copper
 Gold Plated over Copper or Nickel Plate

Mounting Hardware:

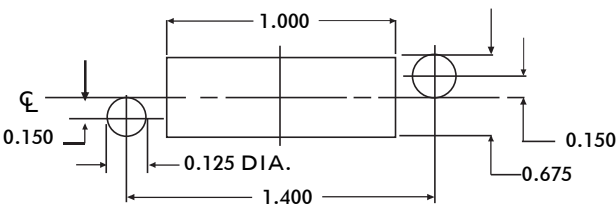
Special Studs, Screws, Lockwashers, and Nuts

Insulation Material:

Choice of **MIL Approved** Thermosetting
 Insulations (See Page 45)

Temperature Ratings: -65°C to +125°C

Weight of Socket with Mountings: 0.45 oz.



RECOMMENDED CHASSIS CUT-OUT

CONTACT DATA	CHASSIS MOUNTING DATA				
	CHASSIS THICKNESS	X-DIMENSION	MOUNTING TYPE		
			BELOW CHASSIS	BELOW CHASSIS	ABOVE CHASSIS
OPEN ENTRY	SOLDER CUP	1/16 .17	HRCE - 1		HRCE - 2
		3/32 .14			
		1/8 .12			
	EYELET	1/16 .17	HRCE - 6		HRCE - 5
		3/32 .14			
		1/8 .12			
	STRAIGHT	1/16			HRCE - 4
		3/32			
		1/8			
	STRAIGHT	1/16			HRCE - 24
		3/32			
		1/8			
WIRE WRAP 0.045 SQ.	1/16 .17	HRCE - 28			
	3/32 .14				
	1/8 .12				
WIRE WRAP 0.025 SQ.	1/16 .17	HRCE - 18			
	3/32 .14				
	1/8 .12				
CLOSED ENTRY	SOLDER CUP	1/16 .17	HRCE - 1K		HRCE - 2K
		3/32 .14			
		1/8 .12			
	EYELET	1/16 .17	HRCE - 6K		HRCE - 5K
		3/32 .14			
		1/8 .12			
	STRAIGHT	1/16			HRCE - 4K
		3/32			
		1/8			
	STRAIGHT 15/64	1/16			HRCE - 24K
		3/32			
		1/8			
WIRE WRAP 0.045 SQ.	1/16 .17	HRCE - 28K			
	3/32 .14				
	1/8 .12				
WIRE WRAP 0.025 SQ.	1/16 .17	HRCE - 18K			
	3/32 .14				
	1/8 .12				