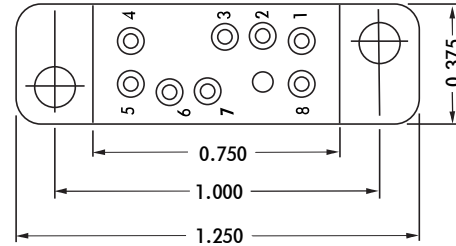
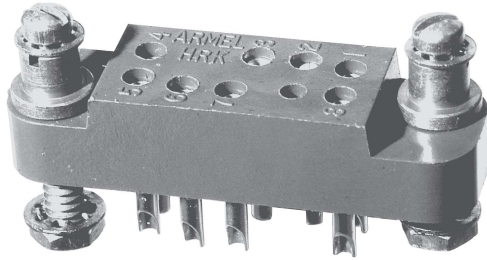
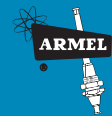
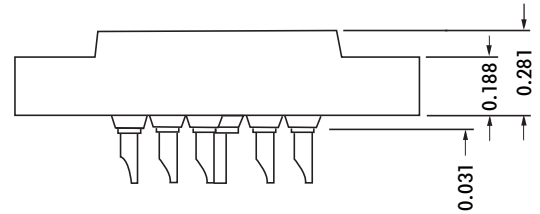


HRK SERIES



CONTACT DATA		CHASSIS MOUNTING DATA			
		CHASSIS THICKNESS	X-DIMENSION		
OPEN ENTRY	SOLDER CUP	1/16	.17	HRK - 1	HRK - 2
		3/32	.14	HRK - 31	HRK - 32
		1/8	.12	HRK - 41	HRK - 42
	EYELET	1/16	.17	HRK - 5	HRK - 6
		3/32	.14	HRK - 35	HRK - 36
		1/8	.12	HRK - 45	HRK - 46
	STRAIGHT	1/16			HRK - 4
		3/32			HRK - 34
		1/8			
CLOSED ENTRY	SOLDER CUP	1/16	.17	HRK - 1K	HRK - 2K
		3/32	.14	HRK - 31K	HRK - 32K
		1/8	.12	HRK - 41K	HRK - 42K
	EYELET	1/16	.17	HRK - 5K	HRK - 6K
		3/32	.14	HRK - 35K	HRK - 36K
		1/8	.12	HRK - 45K	HRK - 46K
	STRAIGHT	1/16			HRK - 4K
		3/32			
		1/8			



ELECTRICAL:

Wire Size:

Solder Cup Type One #20 AWG
 Eyelet Type Two #20 AWG or
 Three #22 AWG

Current Rating 3 Amperes

Withstanding Voltage:

Contact to Contact Sea Level 1000 VRMS Minimum
 Contact to Ground Sea Level 1800 VRMS Minimum
 Contact to Contact 70,000 Ft. 300 VRMS Minimum
 Contact to Ground 70,000 Ft. 450 VRMS Minimum

MECHANICAL:

Creepage Between Contacts 0.09 Minimum
 Air Space Between Contacts 0.03 Minimum
 Contacts to Accept 0.030 ± 0.001 DIA. Pins

Contacts:

Spring Temper Grade "A" Phosphor Bronze, or
 Heat Treated Beryllium Copper
 Gold Plated over Copper or Nickel Plate

Mounting Hardware:

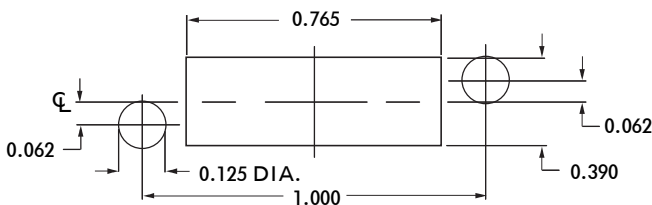
Special Studs, Screws, Lockwashers, and Nuts

Insulation Material:

Choice of **MIL Approved** Thermosetting
 Insulations (See Page 45)

Temperature Ratings: -65°C to +125°C

Weight of Socket with Mountings: 0.23 oz.



RECOMMENDED CHASSIS CUT-OUT