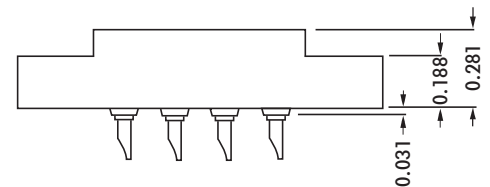
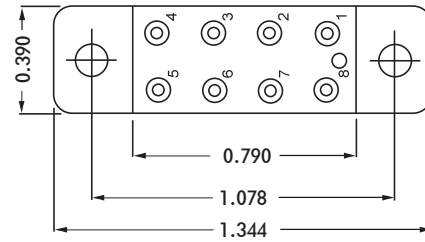
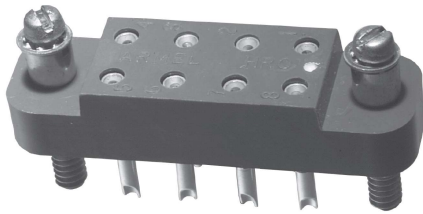


# HRC SERIES



CONTACT DATA		CHASSIS MOUNTING DATA					
		CHASSIS THICKNESS	X-DIMENSION				
				BELOW CHASSIS	BELOW CHASSIS	ABOVE CHASSIS	
OPEN ENTRY	SOLDER CUP	1/16	.17	HRC - 1		HRC - 2	
		3/32	.14		HRC - 31	HRC - 32	
		1/8	.12		HRC - 41	HRC - 42	
	EYELET	1/16	.17	HRC - 5		HRC - 6	
		3/32	.14		HRC - 35	HRC - 36	
		1/8	.12		HRC - 45	HRC - 46	
	STRAIGHT	1/16				HRC - 4	
		3/32				HRC - 34	
		1/8					
	WIRE WRAP	0.025 SQ.	1/16	.17	HRC - 9		HRC - 13
			3/32				
		0.045 SQ.	1/16	.17	HRC - 513		
WIRE WRAP		3/32					
		1/8				HRC - 18	
CLOSED ENTRY	SOLDER CUP	1/16	.17	HRC - 1K		HRC - 2K	
		3/32	.14		HRC - 31K	HRC - 32K	
		1/8	.12		HRC - 41K	HRC - 42K	
	EYELET	1/16	.17	HRC - 5K		HRC - 6K	
		3/32	.14		HRC - 35K	HRC - 36K	
		1/8	.12		HRC - 45K	HRC - 46K	
	STRAIGHT	1/16				HRC - 4K	
		3/32					
		1/8					
	WIRE WRAP	0.045 SQ.	1/16	.17	HRC - 818K		HRC - 18K

## ELECTRICAL

Wire Size:

- Solder Cup Type. . . . . One #20 AWG
- Eyelet Type . . . . . Two #20 AWG or Three #22 AWG

Current Rating . . . . . 3 Amperes

Withstanding Voltage:

- Contact to Contact Sea Level. . . . . 2700 VRMS Minimum
- Contact to Ground Sea Level. . . . . 2250 VRMS Minimum
- Contact to Contact 70,000 Ft. . . . . 560 VRMS Minimum
- Contact to Ground 70,000 Ft. . . . . 500 VRMS Minimum

## MECHANICAL

- Creepage Between Contacts. . . . . 0.17 Minimum
- Air Space Between Contacts. . . . . 0.11 Minimum
- Contacts to Accept 0.030 ± 0.001 DIA. Pins

Contacts:

- Spring Temper Grade "A" Phosphor Bronze, or Heat Treated Beryllium Copper
- Gold Plated over Copper or Nickel Plate

Mounting Hardware:

- Special Studs, Screws, Lockwashers, and Nuts

Insulation Material:

- Choice of MIL Approved Thermosetting Insulations (See Page 45)

Temperature Ratings: -65°C to +125°C

Weight of Socket with Mountings: 0.23 oz.



RECOMMENDED CHASSIS CUT-OUT