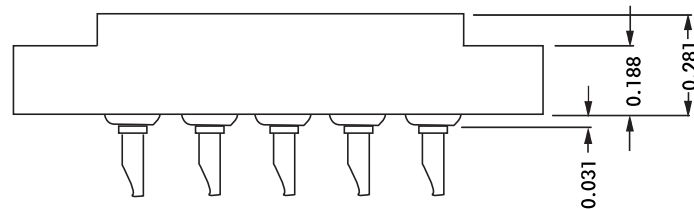
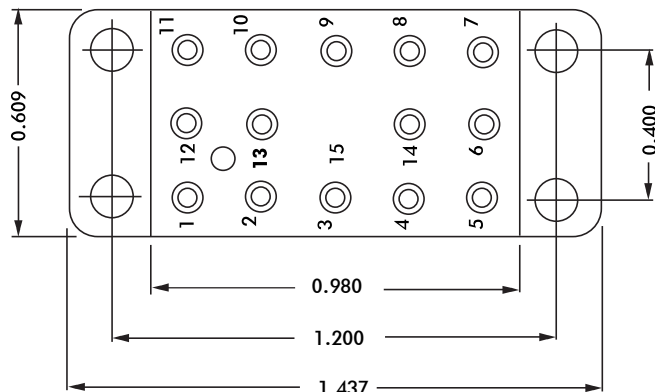
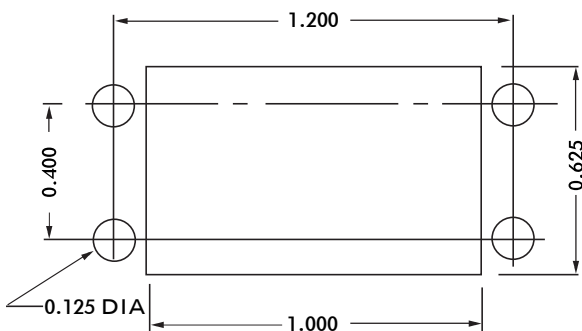


HRCC SERIES



CONTACT DATA	CHASSIS MOUNTING DATA			
	CHASSIS THICKNESS	X-DIMENSION	BELOW CHASSIS	ABOVE CHASSIS
OPEN ENTRY	SOLDER CUP 	1/16 .17	HRCC - 1	HRCC - 2
		3/32 .14		HRCC - 31
		1/8 .12		HRCC - 41
	EYELET 	1/16 .17	HRCC - 5	HRCC - 6
		3/32 .14		HRCC - 35
		1/8 .12		HRCC - 45
STRAIGHT 	1/16		HRCC - 4	
	3/32		HRCC - 34	
	1/8			
WIRE WRAP 	0.045 SQ.	1/16 .17	HRCC - 718	HRCC - 719
		3/32		
		1/8		
CLOSED ENTRY	SOLDER CUP 	1/16 .17	HRCC - 1K	HRCC - 2K
		3/32 .14		HRCC - 31K
		1/8 .12		HRCC - 41K
	EYELET 	1/16 .17	HRCC - 5K	HRCC - 6K
		3/32 .14		HRCC - 35K
		1/8 .12		HRCC - 45K
STRAIGHT 	1/16		HRCC - 4K	
	3/32			
	1/8			
WIRE WRAP 	0.025 SQ.	1/16 .17	HRCC - 513K	HRCC - 18K
		3/32 .23	HRCC - 13K	
		1/8		



RECOMMENDED CHASSIS CUT-OUT

ELECTRICAL

Wire Size:

- Solder Cup Type. One #20 AWG
- Eyelet Type. Two #20 AWG or
Three #22 AWG

Current Rating. 3 Amperes

Withstanding Voltage:

- Contact to Contact Sea Level. 2700 VRMS Minimum
- Contact to Ground Sea Level. 1500 VRMS Minimum
- Contact to Contact 70,000 Ft. 560 VRMS Minimum
- Contact to Ground 70,000 Ft. 375 VRMS Minimum

MECHANICAL

- Creepage Between Contacts. 0.17 Minimum
- Air Space Between Contacts. 0.11 Minimum
- Contacts to Accept 0.030 ± 0.001 DIA. Pins

Contacts:

- Spring Temper Grade "A" Phosphor Bronze, or
- Heat Treated Beryllium Copper
- Gold Plated over Copper or Nickel Plate

Mounting Hardware:

- Special Studs, Screws, Lockwashers, and Nuts

Insulation Material:

- Choice of **MIL Approved** Thermosetting Insulations (See Page 45)

Temperature Ratings: -65°C to +125°C

Weight of Socket with Mountings: 0.43 oz.