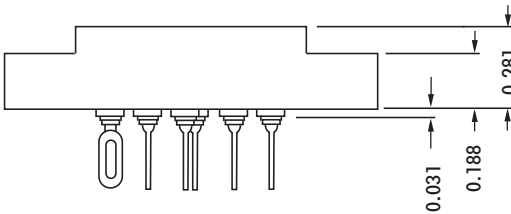
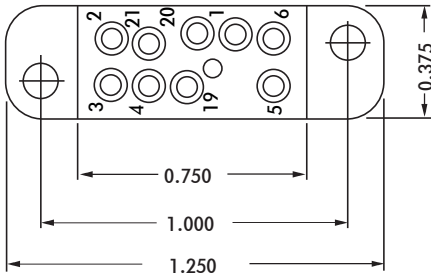
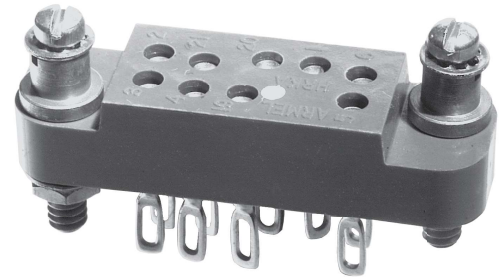




HRKA SERIES



ELECTRICAL

Wire Size:

- Solder Cup Type. One #20 AWG
- Eyelet Type. Two #20 AWG or
Three #22 AWG

Current Rating. 3 Amperes

Withstanding Voltage:

- Contact to Contact Sea Level 1000 VRMS Minimum
- Contact to Ground Sea Level 1800 VRMS Minimum
- Contact to Contact 70,000 Ft. 300 VRMS Minimum
- Contact to Ground 70,000 Ft. 450 VRMS Minimum

MECHANICAL

- Creepage Between Contacts. 0.09 Minimum
- Air Space Between Contacts. 0.03 Minimum
- Contacts to Accept 0.030 ± 0.001 DIA. Pins

Contacts:

- Spring Temper Grade "A" Phosphor Bronze, or
- Heat Treated Beryllium Copper
- Gold Plated over Copper or Nickel Plate

Mounting Hardware:

- Special Studs, Screws, Lockwashers, and Nuts

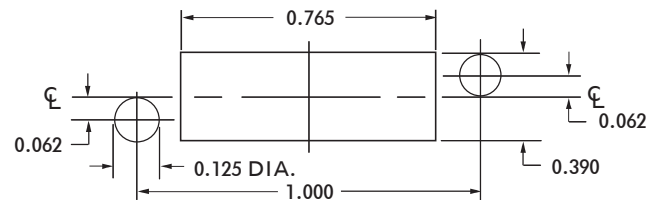
Insulation Material:

- Choice of **MIL Approved** Thermosetting
- Insulations (See Page 45)

Temperature Ratings: -65°C to +125°C

Weight of Socket with Mountings: 0.24 oz.

CONTACT DATA	CHASSIS MOUNTING DATA				
	CHASSIS THICKNESS	X-DIMENSION	MOUNTING TYPE		
			BELOW CHASSIS	BELOW CHASSIS	ABOVE CHASSIS
 SOLDER CUP	1/16	.17	HRKA - 1		HRKA - 2
	3/32	.14		HRKA - 31	HRKA - 32
	1/8	.12		HRKA - 41	HRKA - 42
 EYELET	1/16	.17	HRKA - 5		HRKA - 6
	3/32	.14		HRKA - 35	HRKA - 36
	1/8	.12		HRKA - 45	HRKA - 46
 STRAIGHT	1/16				HRKA - 4
	3/32				
	1/8				



RECOMMENDED CHASSIS CUT-OUT