

CONTACT DATA	CHASSIS MOUNTING DATA				
	CHASSIS THICKNESS	X-DIMENSION	X		
			BELOW CHASSIS	BELOW CHASSIS	ABOVE CHASSIS
 SOLDER CUP	1/16	.44		HRP - 1	HRP - 2
	3/32	.41		HRP - 31	HRP - 32
	1/8	.38		HRP - 41	HRP - 42
 TURRET	1/16	.44		HRP - 3	HRP - 4
	3/32	.41		HRP - 33	HRP - 34
	1/8	.38		HRP - 43	HRP - 44
 WIRE WRAP	1/16	.44		HRP - 19	
	3/32	.41		HRP - 39	
	1/8	.38		HRP - 49	

ELECTRICAL

Wire Size:

Solder Cup Type One #16 AWG or
Two #20 AWG

Turret Type Two #16 AWG or
Three #20 AWG

Current Rating 13 Amperes

Withstanding Voltage:

Contact to Contact Sea Level 1800 VRMS Minimum

Contact to Ground Sea Level 2700 VRMS Minimum

Contact to Contact 70,000 Ft. 450 VRMS Minimum

Contact to Ground 70,000 Ft. 560 VRMS Minimum

MECHANICAL

Creepage Between Contacts 0.12 Minimum

Air Space Between Contacts 0.06 Minimum

Contacts to Accept 0.062 ± 0.001 DIA. Pins

Contacts:

Spring Temper Grade "A" Phosphor Bronze, or

Heat Treated Beryllium Copper

Gold Plated over Copper or Nickel Plate

Mounting Hardware:

Special Studs, Screws, Lockwashers, and Nuts

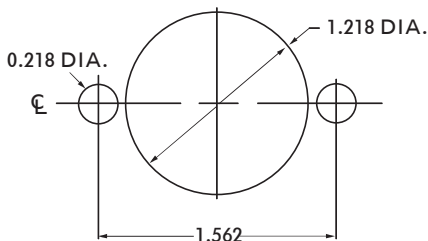
Insulation Material:

Choice of "MIL Approved" Thermosetting

Insulations (See Page 45)

Temperature Ratings: -65°C to +125°C

Weight of Socket with Mountings: 1.54 oz.



RECOMMENDED CHASSIS CUT-OUT