

CONTACT DATA	CHASSIS MOUNTING DATA				
	CHASSIS THICKNESS	X-DIMENSION	X		
			BELOW CHASSIS	BELOW CHASSIS	ABOVE CHASSIS
 SOLDER CUP	1/16	.12		HRE-1	HRE-2
	3/32	.09		HRE-31	HRE-32
	1/8	.06	HRE-41		HRE-42
 EYELET	1/16	.12		HRE-5	HRE-6
	3/32	.09		HRE-35	HRE-36
	1/8	.06	HRE-45		HRE-46
 TURRET	1/16	.12		HRE-3	HRE-4
	3/32	.09		HRE-33	HRE-34
	1/8	.06	HRE-43		HRE-44
 TAPER PIN	1/16	.12		HRE-7	HRE-8
	3/32	.09		HRE-37	HRE-38
	1/8	.06	HRE-47		HRE-48

ELECTRICAL

Wire Size:

- Solder Cup Type One #20 AWG
- Turret Type Two #20 AWG or
Three #22 AWG
- Eyelet Type Two #20 AWG or
Three #22 AWG
- Taper Type One AMP ?37? Taper
Receptacle

Current Rating 7.5 Amperes

Withstanding Voltage:

- Contact to Contact Sea Level 2700 VRMS Minimum
- Contact to Ground Sea Level 6300 VRMS Minimum
- Contact to Contact 70,000 Ft. 560 VRMS Minimum
- Contact to Ground 70,000 Ft. 1065 VRMS Minimum

MECHANICAL

- Creepage Between Contacts 0.16 Minimum
- Air Space Between Contacts 0.09 Minimum
- Contacts to Accept 0.040 ± 0.001 DIA. Pins

Contacts:

- Spring Temper Grade "A" Phosphor Bronze, or
Heat Treated Beryllium Copper
- Gold Plated over Copper or Nickel Plate

Mounting Hardware:

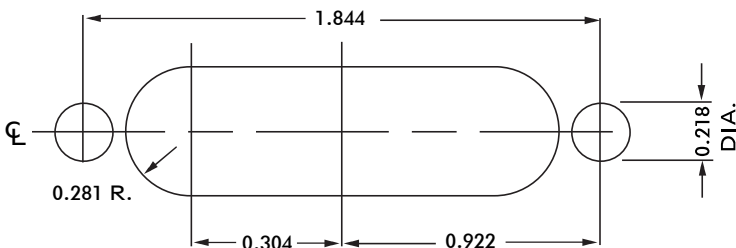
- Special Studs, Screws, Lockwashers, and Nuts

Insulation Material:

- Choice of **MIL Approved** Thermosetting
Insulations (See Page 45)

Temperature Ratings: -65°C to +125°C

Weight of Socket with Mountings: 0.69 oz.



RECOMMENDED CHASSIS CUT-OUT