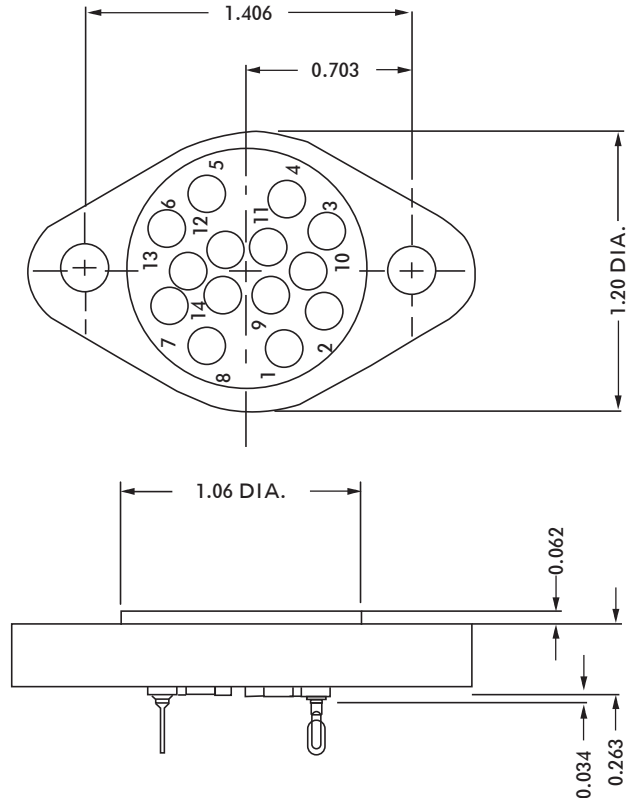
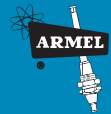


# HRSA SERIES



CONTACT DATA	CHASSIS MOUNTING DATA				
	CHASSIS THICKNESS	X-DIMENSION	MOUNTING TYPE		
			BELOW CHASSIS	BELOW CHASSIS	ABOVE CHASSIS
 SOLDER CUP	1/16	.12		HRSA - 1K	
	3/32	.09		HRSA - 31K	
	1/8	.06	HRSA - 41K		
 EYELET	1/16	.12		HRSA - 5K	HRSA - 6K
	3/32	.09		HRSA - 35K	
	1/8	.06	HRSA - 45K		
 STRAIGHT	1/16				HRSA - 10K
	3/32				
	1/8				

## ELECTRICAL

Wire Size:

- Solder Cup Type . . . . . One #20 AWG
- Eyelet Type . . . . . Two #20 AWG or Three #22 AWG

Current Rating . . . . . 7.5 Amperes

Withstanding Voltage:

- Contact to Contact Sea Level . . . . . 2700 VRMS Minimum
- Contact to Ground Sea Level . . . . . 2700 VRMS Minimum
- Contact to Contact 70,000 Ft. . . . . 560 VRMS Minimum
- Contact to Ground 70,000 Ft. . . . . 560 VRMS Minimum

## MECHANICAL

- Creepage Between Contacts . . . . . 0.16 Minimum
- Air Space Between Contacts . . . . . 0.10 Minimum
- Contacts to Accept 0.040 ± 0.001 DIA. Pins

Contacts:

- Spring Temper Grade "A" Phosphor Bronze, or Heat Treated Beryllium Copper
- Gold Plated over Copper or Nickel Plate

Mounting Hardware:

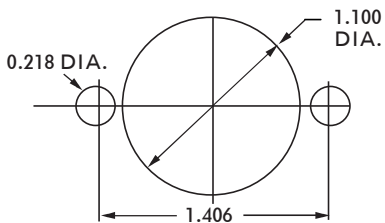
- Special Studs, Screws, Lockwashers, and Nuts

Insulation Material:

- Choice of "MIL Approved" Thermosetting Insulations (See Page 45)

Temperature Ratings: -65°C to +125°C

Weight of Socket with Mountings: 0.95 oz.



RECOMMENDED CHASSIS CUT-OUT