

CONTACT DATA	CHASSIS MOUNTING DATA				
	CHASSIS THICKNESS	X-DIMENSION	MOUNTING TYPE		
			BELOW CHASSIS	BELOW CHASSIS	ABOVE CHASSIS
$\frac{3}{16}$	$\frac{1}{16}$ .17		HRR - 1		HRR - 2
	$\frac{3}{32}$ .14			HRR - 31	HRR - 32
	$\frac{1}{8}$ .12			HRR - 41	HRR - 42
$\frac{1}{4}$	$\frac{1}{16}$ .17		HRR- 5		HRR - 6
	$\frac{3}{32}$ .14			HRR - 35	HRR - 36
	$\frac{1}{8}$ .12			HRR - 45	HRR - 46
$\frac{1}{8}$	$\frac{1}{16}$				HRR - 4
	$\frac{3}{32}$				
	$\frac{1}{8}$				

### ELECTRICAL

Wire Size:

- Solder Cup Type . . . . . One #20 AWG
- Eyelet Type . . . . . Two #20 AWG or  
Three #22 AWG

Current Rating . . . . . 3 Amperes

Withstanding Voltage:

- Contact to Contact Sea Level . . . 1000 VRMS Minimum
- Contact to Ground Sea Level . . . 3300 VRMS Minimum
- Contact to Contact 70,000 Ft. . . . 300 VRMS Minimum
- Contact to Ground 70,000 Ft. . . . 675 VRMS Minimum

### MECHANICAL

Creepage Between Contacts . . . . . 0.09 Minimum

Air Space Between Contacts . . . . . 0.03 Minimum

Contacts to Accept  $0.020 \pm 0.001$  DIA. Pins

Contacts:

- Spring Temper Grade "A" Phosphor Bronze, or
- Heat Treated Beryllium Copper
- Gold Plated over Copper or Nickel Plate

Mounting Hardware:

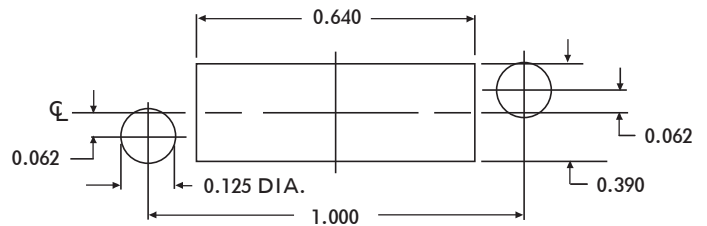
- Special Studs, Screws, Lockwashers, and Nuts

Insulation Material:

- Choice of **MIL Approved** Thermosetting
- Insulations (See Page 45)

Temperature Ratings: -65°C to +125°C

Weight of Socket with Mountings: 0.23 oz.



RECOMMENDED CHASSIS CUT-OUT